

ATHENS COUNTY AUDITOR TAX PLAT

Approx. Scale 1" = 400' or 6 Chains

SEC. 30  
Trimble Twp.  
T11 - R14

PERRY COUNTY

COUNTY

HOCKING

SEC. 30

Semingson Enterprises, Inc.  
368-88

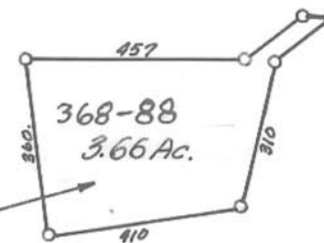
588.25 Ac.

Plat 588.116 ac

Scioto Land Co. LLC

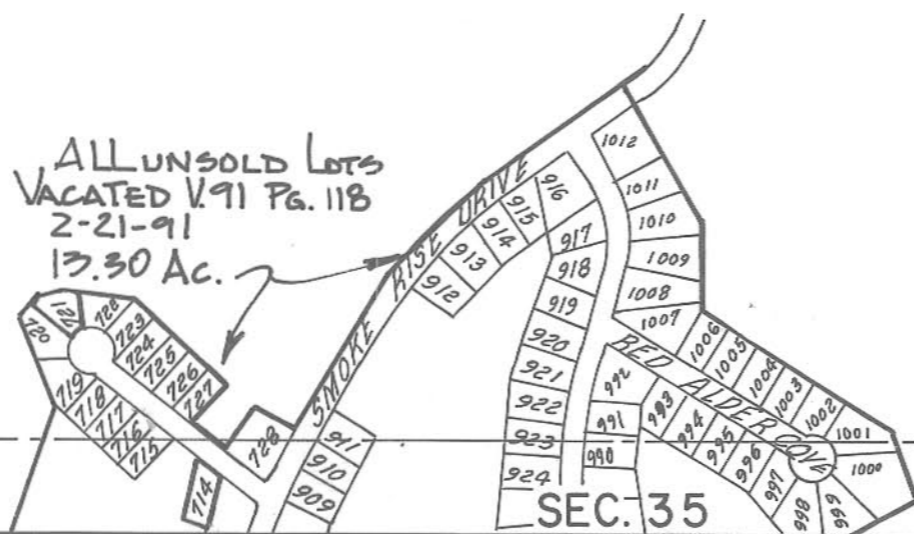
1-20-06

Semingson Enterprises, Inc.



LAVESTOO INC.  
340-1  
1.0 AC.

ALL UNSOLD LOTS  
VACATED V.91 PG. 118  
2-21-91  
17.30 AC.



Revised to