

SOUTHEASTERN LAND SURVEYS

LEONARD F. SWOYER
REGISTERED PROFESSIONAL LAND SURVEYOR

3428 Pleasant Hill Road
Athens, Ohio 45701
614/593-8701

Situated in Lease Lot 3, Section 1, Town 8, Range 14,
Alexander Township, Athens County, Ohio and described as
follows:

Commencing at the southeast corner of said Lease Lot 3; thence
on an assumed bearing of North, a distance of 742.50 feet to a set
iron pin at the southeast corner of a 35.6 acre tract described in
Volume 35 Page 792 of the Athens County Deed Records; thence along the
south line of said 35.6 acre tract North 89 degrees 22 minutes 02
seconds West, a distance of 1746.65 feet to a point at the southwest
corner of a 10 acre tract described in Volume 12 Page 25 of the Athens
County Deed Records; thence along the west line of said ten acre
tract North 0 degrees 03 minutes 20 seconds East, a distance of 799.65
feet to a point in the center of Athens County Road 69, the northwest
corner of said ten acre tract and THE TRUE POINT OF BEGINNING; thence
continuing along said line, North 0 degrees 03 minutes 20 seconds
East, a distance of 322.35 feet to a set iron pin at the northwest
corner of aforesaid 35.6 acre tract; thence South 89 degrees 59
minutes 02 seconds East, a distance of 1744.90 feet to a fence corner
post at the northeast corner of said 35.6 acre tract; thence along the
east line of said 35.6 acre tract South 0 degrees 01 minute 41 seconds
East (passing a set iron pin at 346.24 feet) for a total
distance of 361.24 feet to a point in the center of Athens County Road
69; thence along the center of said Athens County Road 69 the following
thirteen bearings and distances; South 81 degrees 53 minutes 22
seconds West, a distance of 38.01 feet to a point; thence South 86
degrees 38 minutes 17 seconds West, a distance of 88.39 feet to a
point; thence South 89 degrees 32 minutes 42 seconds West, a distance
of 110.26 feet to a point; thence North 87 degrees 59 minutes 08
seconds West, a distance of 95.66 feet to a set railroad spike; thence
North 85 degrees 39 minutes 06 seconds West, a distance of 754.14 feet
to a set railroad spike; thence North 86 degrees 42 minutes 32 seconds
West, a distance of 68.60 feet to a point; thence North 89 degrees 23
minutes 15 seconds West, a distance of 73.32 feet to a point; thence
South 89 degrees 21 minutes 30 seconds West, a distance of 76.38 feet
to a point; thence South 87 degrees 53 minutes 17 seconds West, a
distance of 81.86 feet to a point; thence South 80 degrees 30 minutes
29 seconds West, a distance of 197.10 feet to a point; thence North 82
degrees 14 minutes 05 seconds West, a distance of 70.01 feet to a
point; thence North 68 degrees 24 minutes 42 seconds West, a distance

Description checked for
Mathematical Accuracy
ATHENS COUNTY
ENGINEER'S OFFICE

BY:

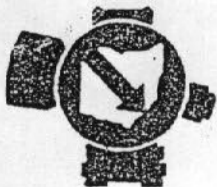
DATE: 7-27-98

File # 1

PROPERTY

CONSTRUCTION

SUBDIVISIONS



SOUTHEASTERN LAND SURVEYS

LEONARD F. SWOYER
REGISTERED PROFESSIONAL LAND SURVEYOR

3428 Pleasant Hill Road
Athens, Ohio 45701
614/593-8701

of 27.46 feet to a point; thence North 78 degrees 30 minutes 59 seconds West, a distance of 38.15 feet to a point; thence South 81 degrees 29 minutes 15 seconds West, a distance of 35.42 feet to a point; the POINT OF BEGINNING; and containing 13.561 acres, and being a part of a 35.6 acre tract described in Volume 35 Page 792 of the Athens County Deed Records.

Note: Unless otherwise noted, all set iron pins are 5/8 inch diameter rebar and 30 inches in length and capped with a plastic identification marker inscribed Leonard F. Swoyer R.L.S. 6765.

The above description was prepared under the supervision of Leonard F. Swoyer Registered Professional Land Surveyor No. 6765 and based on a survey performed by Southeastern Land Surveys dated August 26, 1993.

Subject to all easements and right of ways of record.

PROPERTY

CONSTRUCTION

SUBDIVISIONS

2

Point	Direction	Distance	Northing	Easting	Elevation
Database opened: Monday, July 27, 1998 9:27 am.					
Assigned point					
1			5000.00000	5000.00000	0.000
Start			5000.00000	5000.00000	0.000
Raw:	n00.0320e	322.35			
TR	N 0°03'20.0" E	322.350			
2			5322.34985	5000.31256	0.000
Raw:	s89.5902e	1744.90			
TR	S 89°59'02.0" E	1744.900			
3			5321.85920	6745.21249	0.000
Raw:	s00.0141e	361.24			
TR	S 0°01'41.0" E	361.240			
4			4960.61924	6745.38938	0.000
Raw:	s81.5322w	38.01			
TR	S 81°53'22.0" W	38.010			
5			4955.25665	6707.75956	0.000
Raw:	s86.3817w	88.39			
TR	S 86°38'17.0" W	88.390			
6			4950.07317	6619.52168	0.000
Raw:	s89.3242w	110.26			
TR	S 89°32'42.0" W	110.260			
7			4949.19757	6509.26516	0.000
Raw:	n87.5908w	95.66			
TR	N 87°59'08.0" W	95.660			
8			4952.56016	6413.66428	0.000
Raw:	n85.3906w	754.14			
TR	N 85°39'06.0" W	754.140			
9			5009.73898	5661.69505	0.000
Raw:	n86.4232w	68.60			
TR	N 86°42'32.0" W	68.600			
10			5013.67725	5593.20819	0.000
Raw:	n89.2315w	73.32			
TR	N 89°23'15.0" W	73.320			
11			5014.46104	5519.89238	0.000
Raw:	s89.2130w	76.38			
TR	S 89°21'30.0" W	76.380			

3

4

Point	Direction	Distance	Northing	Eastng	Elevation
12	Raw: S 87.5317° W	81.86	5013.60566	5443.51717	0.000
13	Raw: S 80.3029° W	197.10	5010.58895	5361.71277	0.000
14	Raw: S 82.1405° W	70.01	4978.08540	5167.31131	0.000
15	Raw: N 82.1405° W	70.01	4987.54481	5097.94331	0.000
16	Raw: N 68.2442° W	27.46	4997.64831	5072.40959	0.000
17	Raw: N 78.3059° W	38.15	5005.24350	5035.02328	0.000
18	Raw: S 81.2915° W	35.42	5000.00045	4999.99349	0.000
1	IN: S 86.0125.9° E	0.007	5000.00000	5000.00000	0.000

Area = 590740.370 Sq. Feet or 13.562 Acres

Database Saved: Monday, July 27, 1998 9:41 am.

Database opened: Monday, July 27, 1998 9:27 am.



SOUTHEASTERN LAND SURVEYS

LEONARD F. SWOYER
REGISTERED PROFESSIONAL LAND SURVEYOR

3428 Pleasant Hill Road
Athens, Ohio 45701
614/593-8701

Situated in Lease Lot 3, Section 1, Town 8, Range 14, Alexander Township, Athens County, Ohio and described as follows:

Commencing at the southeast corner of said Lease Lot 3; thence on an assumed bearing of North, a distance of 742.50 feet to a set iron pin at an approximate fence corner, the TRUE POINT OF BEGINNING; thence along the north property line of a 29.26 acre tract described in Volume 12 Page 25 of the Athens County Official Deed Records North 89 degrees 26 minutes 46 seconds West a distance of 1218.63 feet to a fence corner post; thence along the west line of a 35.6 acre tract described in Volume 35 Page 792 of the Athens County Official Deed Records North 0 degrees 30 minute 32 seconds West, a distance of 821.66 feet to a point in the center of Athens County Road 69; thence along the center of said Athens County Road 69 the following six bearings and distances: South 89 degrees 23 minutes 15 seconds East, a distance of 73.32 feet to a point; thence South 86 degrees 42 minutes 32 seconds East, a distance of 68.60 feet to a set railroad spike; thence South 85 degrees 39 minutes 06 seconds East, a distance of 754.14 feet to a set railroad spike; thence South 87 degrees 59 minutes 08 seconds East, a distance of 95.66 feet to a point; thence North 89 degrees 32 minutes 42 seconds East, a distance of 110.26 feet to a point; thence North 86 degrees 38 minutes 17 seconds East, a distance of 88.39 feet to a point; thence North 81 degrees 53 minutes 22 seconds East, a distance of 38.01 feet to a point; thence leaving the said Athens County Road 69 and along the east property line of the aforesaid 35.6 acre tract South 0 degrees 01 minute 41 seconds East (passing a set iron pin at 55.00 feet) for a total distance of 779.56 feet to the POINT OF BEGINNING; and containing 22.156 acres, and being a part of 35.6 acre tract described in Volume 35 Page 792 of the Athens County Official Deed Records.

Note: Unless otherwise noted, all set iron pins are 5/8 inch diameter rebar and 30 inches in length and capped with a plastic identification marker inscribed Leonard F. Swoyer R.L.S. 6765.

Description checked for
Mathematical Accuracy
ATHENS COUNTY
ENGINEER'S OFFICE

BY: L. Cantelberry
DATE: 7-27-98

The above description was prepared under the supervision of Leonard F. Swoyer Registered Professional Land Surveyor No. 6765 and based on a survey performed by Southeastern Land Surveys dated August 26, 1993.

Subject to all easements and right of ways of record.

PROPERTY

CONSTRUCTION

SUBDIVISIONS

5

Point	Direction	Distance	Northing	Easting	Elevation
Database opened: Monday, July 27, 1998 9:50 am.					
Assigned point					
1			5000.00000	5000.00000	0.000
Start					
1			5000.00000	5000.00000	0.000
Raw:	n89.2646w	1218.63			
TR	N 89°26'46.0" W	1218.630			
2			5011.78054	3781.42694	0.000
Raw:	n00.3032w	821.66			
TR	N 0°30'32.0" W	821.660			
3			5833.40813	3774.12923	0.000
Raw:	s89.2315e	73.32			
TR	S 89°23'15.0" E	73.320			
4			5832.62434	3847.44504	0.000
Raw:	s86.4232e	68.60			
TR	S 86°42'32.0" E	68.600			
5			5828.68608	3915.93190	0.000
Raw:	s85.3906e	754.14			
TR	S 85°39'06.0" E	754.140			
6			5771.50726	4667.90113	0.000
Raw:	s87.5908e	95.66			
TR	S 87°59'08.0" E	95.660			
7			5768.14467	4763.50201	0.000
Raw:	n89.3242e	110.26			
TR	N 89°32'42.0" E	110.260			
8			5769.02026	4873.75854	0.000
Raw:	n86.3817e	88.39			
TR	N 86°38'17.0" E	88.390			
9			5774.20375	4961.99642	0.000
Raw:	n81.5322e	38.01			
TR	N 81°53'22.0" E	38.010			
10			5779.56633	4999.62623	0.000
Raw:	s00.0141e	779.56			
TR	S 0°01'41.0" E	779.560			
11			5000.00643	5000.00795	0.000
IN	S 51°02'30.3" W	0.010			
1			5000.00000	5000.00000	0.000

6

L

Point Direction Distance Northing Easting Elevation

Database opened: Monday, July 27, 1998 9:50 am.

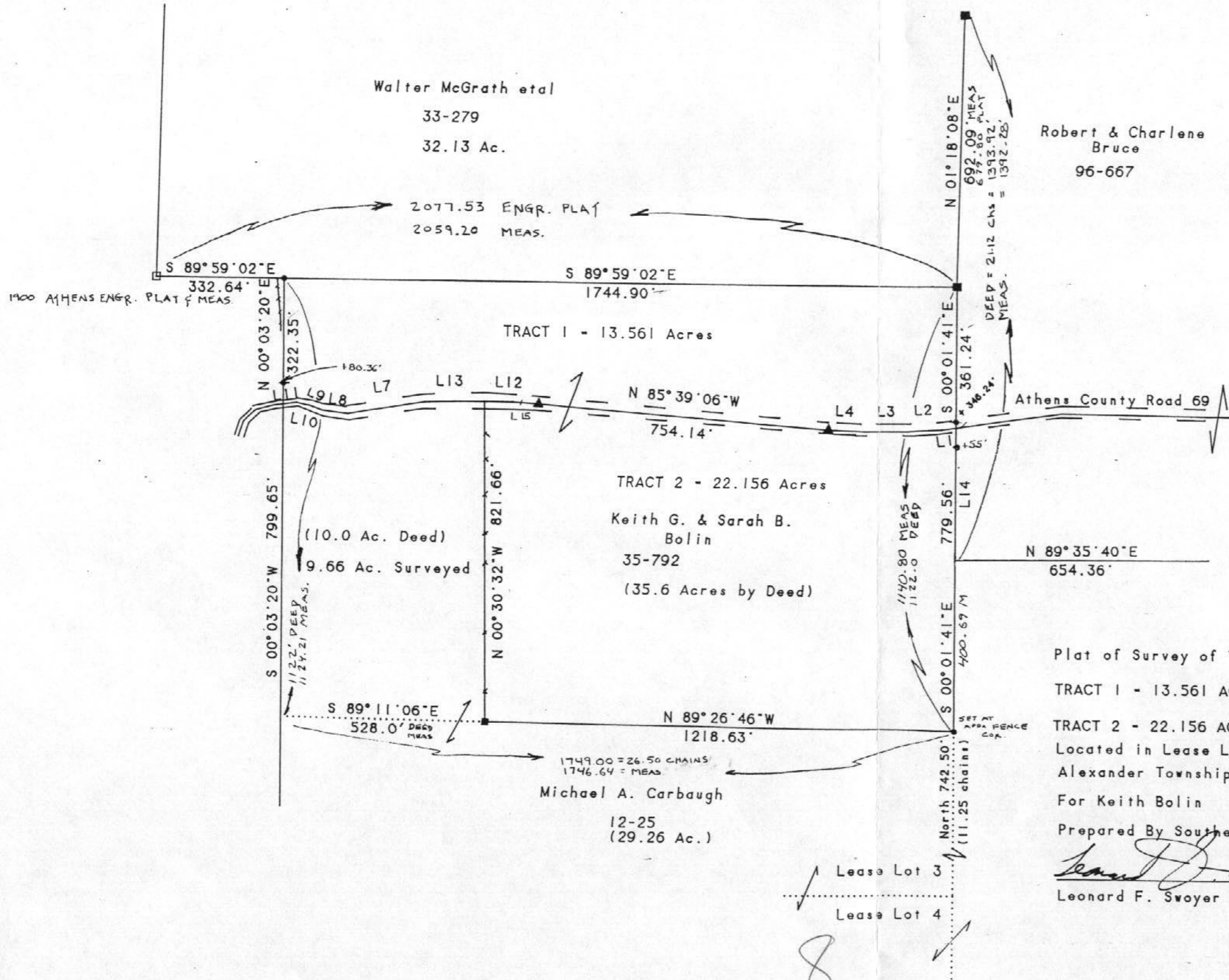
Assigned point	Point	Direction	Distance	Northing	Easting	Elevation
Start	1			5000.00000	5000.00000	0.000
Raw:	1			5000.00000	5000.00000	0.000
TR	2	N 89°28'46.0" W	1218.630	5011.78054	3781.42684	0.000
Raw:	2			5011.78054	3781.42684	0.000
TR	3	N 0°30'32.0" W	821.680	5833.40813	3724.12823	0.000
Raw:	3			5833.40813	3724.12823	0.000
TR	4	S 89°23'15.0" E	73.320	5832.62434	3847.44504	0.000
Raw:	4			5832.62434	3847.44504	0.000
TR	5	S 86°42'32.0" E	68.600	5858.68608	3818.93180	0.000
Raw:	5			5858.68608	3818.93180	0.000
TR	6	S 82°39'06.0" E	754.140	5771.50258	4667.90113	0.000
Raw:	6			5771.50258	4667.90113	0.000
TR	7	S 87°58'08.0" E	82.660	5768.14487	4763.50201	0.000
Raw:	7			5768.14487	4763.50201	0.000

Database Saved: Monday, July 27, 1998 9:55 am.

Area = 965154.113 Sq. Feet or 22.157 Acres

Point	Direction	Distance	Northing	Easting	Elevation
8	N 88°38'17.0" E	88.390	5774.50322	4881.88842	0.000

11	S 81°03'30.3" W	0.010	5000.00000	5000.00000	0.000
----	-----------------	-------	------------	------------	-------



scale 1" = 300'

- - iron pin set
- - fence post
- - stone found
- ▲ - railroad spike set

LINE	BEARING	DISTANCE
L 1	S 81° 53' 22" W	38.01'
L 2	S 86° 38' 17" W	88.39'
L 3	S 89° 32' 42" W	110.26'
L 4	N 87° 59' 08" W	95.66'
L 5	N 86° 42' 32" W	68.60'
L 6	S 87° 53' 17" W	81.86'
L 7	S 80° 30' 29" W	197.10'
L 8	N 82° 14' 05" W	70.01'
L 9	N 68° 24' 42" W	27.46'
L 10	N 78° 30' 59" W	38.15'
L 11	S 81° 29' 15" W	35.42'
L 12	N 89° 23' 15" W	73.32'
L 13	S 89° 21' 30" W	76.38'
L 14	S 00° 01' 41" E	338.97'
L 15	S 86° 42' 32" E	68.60'

Plat of Survey of Two Tracts

TRACT 1 - 13.561 ACRES

TRACT 2 - 22.156 ACRES

Located in Lease Lot 3, Section 1, Town 8, Range 14,
Alexander Township, Athens County, Ohio

For Keith Bolin August 26, 1993

Prepared By Southeastern Land Surveys

Leonard F. Swoyer
Leonard F. Swoyer P.L.S. 6768

Description checked for
Mathematical Accuracy
ATHENS COUNTY
ENGINEER'S OFFICE
BY: *L. Lantieri*
DATE: 7-27-98

8

9