

# BRANNER SURVEYING

MEMBER-PROFESSIONAL LAND SURVEYORS OF OHIO

12500 N. PEACH RIDGE ROAD  
ATHENS, OHIO 45701

JOHN M. BRANNER  
Registered Land Surveyor

TELEPHONE  
(614) 592-5778

## DESCRIPTION OF A 12.75 ACRE TRACT

Situated in Lease Lot 6, Section 5, T.8, R.14, Alexander Township, Athens County, Ohio and being a part of a 62.31 acre tract as described in Volume 162, Page 129 of the Official Records and being more particularly described as follows:

Commencing at the South-west corner of Lease Lot 6, thence, North 00 Degrees 22 Minutes 36 Seconds East, 475.36 feet to an iron pin found in Township Road 64;  
thence, along said road, North 3 degrees 40 minutes 52 seconds West, a distance of 149.20 feet;  
thence North 1 degrees 55 minutes 12 seconds East, a distance of 119.03 feet to the POINT OF BEGINNING for the tract of land herein described:

thence, along said road, North 1 degrees 55 minutes 13 seconds East, a distance of 105.52 feet;

thence North 0 degrees 51 minutes 56 seconds East, a distance of 373.79 feet;

thence, leaving said road, South 89 degrees 41 minutes 27 seconds East, a distance of 991.81 feet to an iron pin set, passing an iron pin set at ;

thence South 0 degrees 18 minutes 32 seconds West, a distance of 345.10 feet to an iron pin set;

thence South 56 degrees 33 minutes 11 seconds West, a distance of 384.31 feet to an iron pin set;

thence South 70 degrees 03 minutes 18 seconds West, a distance of 392.03 feet to an iron pin set;

thence North 55 degrees 01 minute 45 seconds West, a distance of 378.23 feet, passing an iron pin set at 352.23 feet to the POINT OF BEGINNING; said described tract containing 12.75 acres.

Subject to all easements and rights of way of record.

The above description is based on a field survey completed October 1995 by John M. Branner P.s. 6805

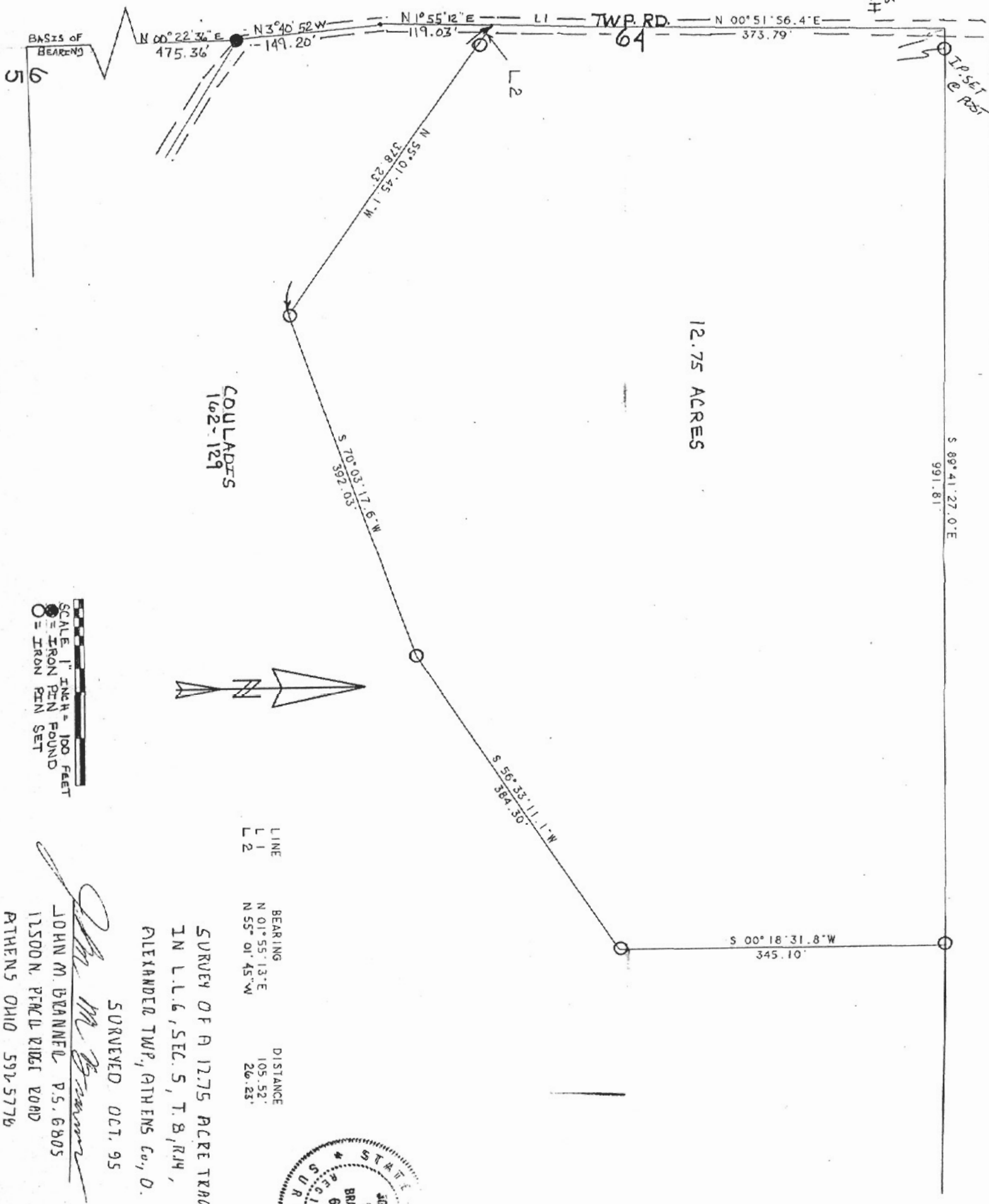
Description checked for  
Mathematical Accuracy  
ATHENS COUNTY  
ENGINEER'S OFFICE  
BY: S. Blaus  
DATE: 10-23-95

Description checked for  
Mathematical Accuracy  
ATHENS COUNTY  
ENGINEER'S OFFICE  
BY: S. Blaus  
DATE: 10-23-95



TRUSTEES OF BATES  
METHODIST CHURCH  
212-589

JOHN A. DEAL  
364-590



12.75 ACRES

COULADES  
162-129

LINE	BEARING	DISTANCE
L 1	N 01° 55' 13" E	105.52'
L 2	N 55° 01' 45" W	26.25'

SURVEY OF A 12.75 ACRE TRACT  
IN L.L.6, SEC. 5, T. 8, R. 14,  
ALEXANDER TWP., ATHENS Co., O.

SURVEYED OCT. 95



SCALE 1" = 100 FEET  
● = IRON PIN FOUND  
○ = IRON PIN SET

*John M. Brannan*  
JOHN M. BRANNAN, P.S. 6805  
12500 N. FINELL ROAD  
ATHENS OHIO 592-5776

102

ALX #5

ACREAGE, CLOSURE, AND ERROR OF PLAT

Line #	Direction	Angle	Distance	Angle	Distance	Direction	Distance
1	South	89°	41'	27"	East	991.81 feet.	
2	South	00°	18'	32"	West	345.10 feet.	
3	South	56°	33'	11"	West	384.31 feet.	
4	South	70°	03'	18"	West	392.03 feet.	
5	North	55°	00'	01"	West	378.23 feet.	
6	North	01°	55'	13"	East	105.52 feet.	
7	North	00°	51'	56"	East	373.79 feet.	

The easting error is 0.11 feet.

The northing error is 0.16 feet.

The gap in closure is 0.19 feet.

The precision of the field survey is  
0.64 feet error per 10,000 feet traverse.

The area computes to be 12.75 acres.

ACREAGE, CLOSURE, AND ERROR OF PLAT

Line #	Direction	Angle	Distance	Angle	Distance	Direction	Distance
1	South	89°	41'	27"	East	991.81 feet.	
2	South	00°	18'	32"	West	345.10 feet.	
3	South	56°	33'	11"	West	384.31 feet.	
4	South	70°	03'	18"	West	392.03 feet.	
5	North	55°	01'	45"	West	378.23 feet.	
6	North	01°	55'	13"	East	105.52 feet.	

103