

# BRANNER SURVEYING

MEMBER-PROFESSIONAL LAND SURVEYORS OF OHIO

12500 N. PEACH RIDGE ROAD  
ATHENS, OHIO 45701

JOHN M. BRANNER  
Registered Land Surveyor

TELEPHONE  
(740) 592-5778

## DESCRIPTION OF A 5.000 ACRE TRACT

Situated in Lease Lot 6, Section 5, T. 8, R. 14, Alexander Township, Athens County, Ohio and being more particularly described as follows.

Commencing at the South-west corner of Lease Lot 6;  
thence, North 0 degrees 22 minutes 36 seconds East, a distance of 475.36 feet to an iron pin found in Township Road 64, said iron pin found being the POINT OF BEGINNING;  
thence, following said Township Road 64, South 57 degrees 24 minutes 57 seconds East, a distance of 125.45 feet to a point;  
thence, South 84 degrees 06 minutes 17 seconds East, a distance of 366.76 feet to a point;  
thence, South 80 degrees 43 minutes 27 seconds East, a distance of 316.55 feet to a point, said point being the point of curvature of a tangent curve, concave to the south, having a radius of 360.00 feet, a central angle of 1 degree 44 minutes 10 seconds, a chord Bearing of S 79 degrees 51 minutes 22 seconds E, and a chord distance of 10.91 feet;  
thence, east along said curve, a distance of 10.91 feet to a point;  
thence, leaving said Road, North 30 degrees 03 minutes 37 seconds East, a distance of 89.17 feet to an iron pin set, passing an iron pin set at 15.57 feet;  
thence, North 2 degrees 08 minutes 31 seconds East, a distance of 201.79 feet to an iron pin set;  
thence, North 0 degrees 25 minutes 02 seconds East, a distance of 179.30 feet to an iron pin set;  
thence, South 56 degrees 33 minutes 11 seconds West, a distance of 208.92 feet to an iron pin found;  
thence, South 70 degrees 03 minutes 18 seconds West, a distance of 392.03 feet to an iron pin found;  
thence, North 55 degrees 01 minute 45 seconds West, a distance of 378.23 feet to a point in the aforementioned Township Road 64, passing an iron pin found at 352.06 feet;  
thence, following said Road, South 1 degree 55 minutes 12 seconds West, a distance of 119.03 feet to a point;  
thence, South 3 degrees 40 minutes 52 seconds East, a distance of 149.20 feet to the POINT OF BEGINNING; said described tract containing 5.000 acres (217,792.6441 square feet).

Subject to all easements and right-of-ways of record.  
All iron pins set are 5/8 inch x 30 inch long rebar.

The above description is based on a field survey completed November 1998 By: John M. Branner  
P.S. 6805, 12500 N. Peach Ridge Road, Athens, Ohio 45701 (740) 592-5778

Description checked for  
Mathematical Accuracy  
ATHENS COUNTY  
ENGINEER'S OFFICE

BY: S. Blouse  
DATE: 11-17-98

26

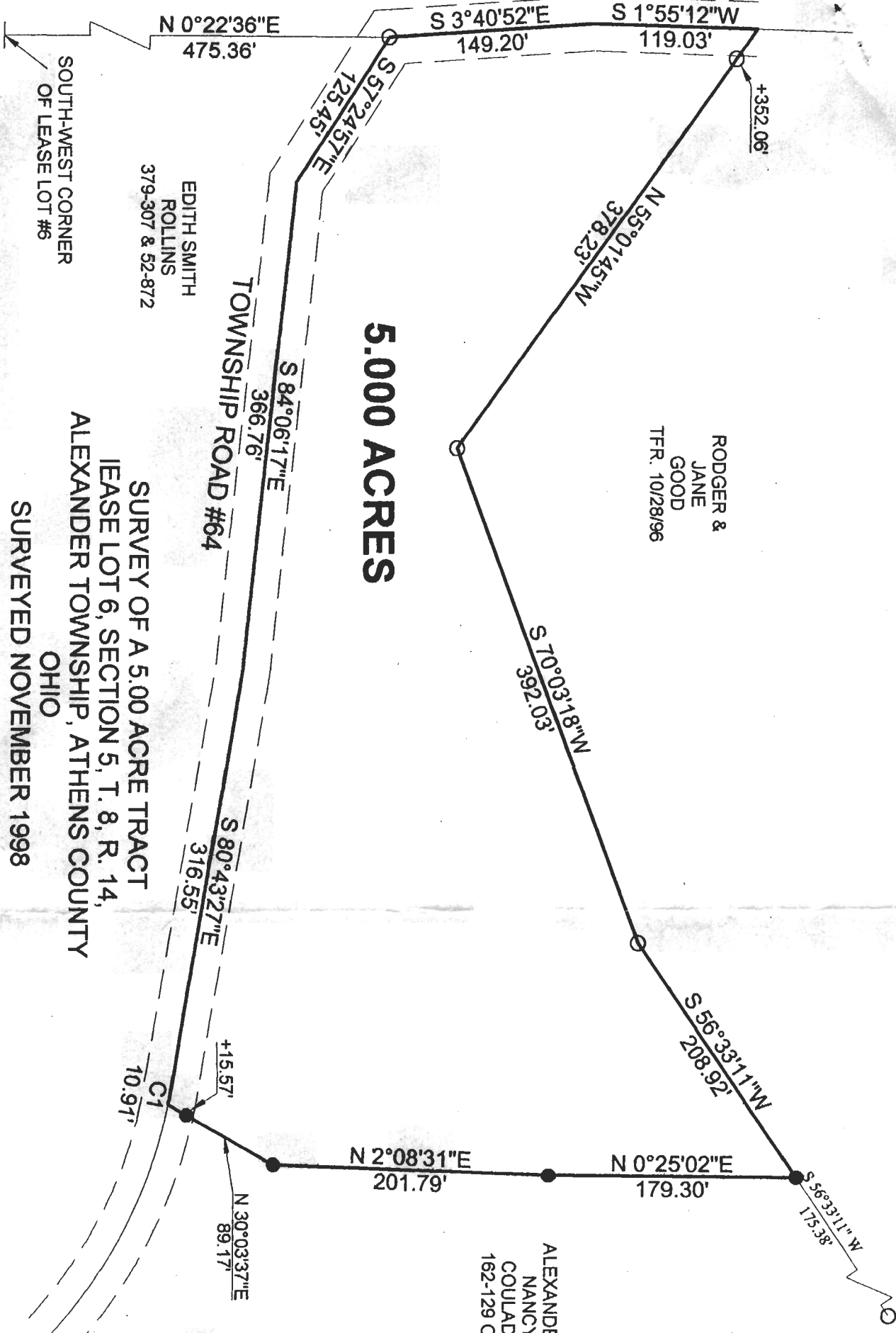
ALX#5

Point	Direction	Distance	Northing	Easting	Elevation
Database opened: Tuesday, November 17, 1998 8:26 am.					
Assigned point					
1			5000.00000	5000.00000	0.000
Start					
1			5000.00000	5000.00000	0.000
Raw:	s57.2457c	125.45			
TR	S 57°24'57.0" E	125.450			
2			4932.44041	5105.70433	0.000
Raw:	s84.0617c	366.76			
TR	S 84°06'17.0" E	366.760			
3			4894.77029	5470.52464	0.000
Raw:	s80.4327c	316.55			
TR	S 80°43'27.0" E	316.550			
4			4843.74637	5782.93536	0.000
Raw:	s79.5122c	10.91			
TR	S 79°51'22.0" E	10.910			
5			4841.82489	5793.67483	0.000
Raw:	n30.0337c	89.17			
TR	N 30°03'37.0" E	89.170			
6			4919.00143	5838.34104	0.000
Raw:	n02.0831c	201.79			
TR	N 2°08'31.0" E	201.790			
7			5120.65044	5845.88300	0.000
Raw:	n00.2502c	179.30			
TR	N 0°25'02.0" E	179.300			
8			5299.94568	5847.18863	0.000
Raw:	s56.3311w	208.92			
TR	S 56°33'11.0" W	208.920			
9			5184.79638	5672.86651	0.000
Raw:	s70.0318w	392.03			
TR	S 70°03'18.0" W	392.030			
10			5051.06791	5304.35027	0.000
Raw:	n55.0145w	378.23			
TR	N 55°01'45.0" W	378.230			
11			5267.85398	4994.41199	0.000
Raw:	s01.5512w	119.03			
TR	S 1°55'12.0" W	119.030			
12			5148.89080	4990.42401	0.000
Raw:	s03.4052c	149.20			
TR	S 3°40'52.0" E	149.200			
13			4999.99863	5000.00314	0.000
IN	N 66°24'17.4" W	0.003			
1			5000.00000	5000.00000	0.000

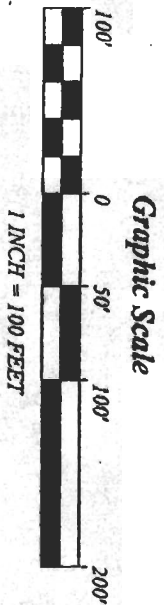
Area = 217791.549 Sq. Feet or 5.000 Acres

Database Saved: Tuesday, November 17, 1998 8:41 am.

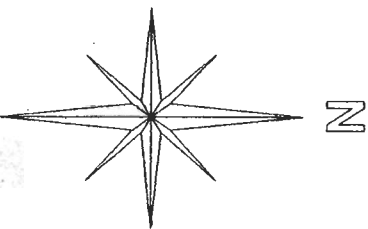
27



Description checked for  
Mathematical Accuracy  
ATHENS COUNTY  
ENGINEERS OFFICE  
BY: S. J. Branner  
DATE: 11-17-98



BEARINGS ARE BASED ON A SURVEY  
OF A 12.75 ACRE TRACT AND ARE USED  
TO DENOTE ANGLES ONLY



29