

**DESCRIPTION OF
50.659 Acres**


Situated in Lease Lot 1, Section 25, Town 8, Range 14, Alexander Township, Athens County, Ohio, and being more fully described as follows:

Commencing at the Northwest Corner of Said Lease Lot 1: thence S 00°37'24" E 24.96 feet to an iron pin set at the point of beginning of the tract herein described;

Thence, N 79°34'55" E, 132.92 feet to an iron pin set;
Thence, S 89°35'51" E, 1364.45 feet to an iron pin set;
Thence, S 00°08'39" W, 1558.58 feet to a point in the center of County Road 69 (Chase Road), passing an iron pin set at 1508.58 feet;
Thence, along said road N 76°49'12" W, 140.14 feet to a point;
Thence, N 83°48'55" W, 69.20 feet to a point;
Thence, S 83°55'00" W, 101.08 feet to a point;
Thence, S 72°34'10" W, 216.48 feet to a point;
Thence, S 74°40'31" W, 603.69 feet to a point;
Thence, leaving the road N 00°03'53" W, 651.59 feet to an iron pin set, passing an iron pin set at 30.00 feet;
Thence, S 89°56'07" W, 384.12 feet to an iron pin set;
Thence, N 00°37'24" W, 1088.72 feet to an iron pin set;
the **POINT AND PLACE OF BEGINNING.**
CONTAINING: 50.659 acres

Prior Deed Reference Volume 382, Page 601

Subject to easements, rights-of-way and all covenants and agreements of record.

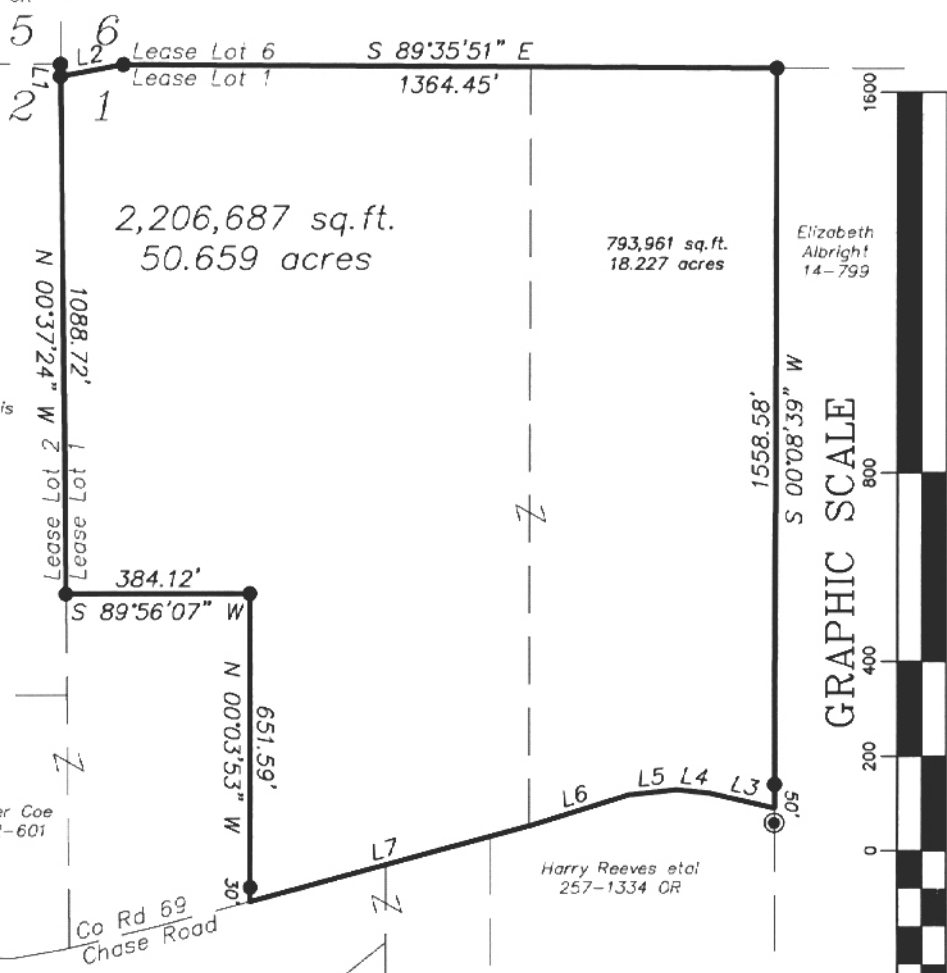

Charles T. Newman
Registered Surveyor S-8043
66 Elmwood Place
Athens, Ohio 45701

July 19, 2003
C:\My Documents\Descriptions\Musselman1.doc

Description checked for
Mathematical Accuracy
ATHENS COUNTY
ENGINEER'S OFFICE
BY: S. Blausly
DATE: 7-21-03

ALK # 25

Chaddock 267-724 OR



GRAPHIC SCALE
 (IN FEET)
 1 inch = 400 ft.

Description checked for
 Mathematical Accuracy
 ATHENS COUNTY
 ENGINEER'S OFFICE
 BY: S. Blauer
 DATE: 7-21-03

⊙ = Iron Pin Found
 ● = Iron Pin Set



Plat of Survey of 50.659 Acres
 Situated in Lease Lot 1, Section 25,
 Town 8, Range 14, Alexander
 Township, Athens County, Ohio
 Surveyed July 19, 2003 for:
 Mark Musselman

Charles T. Newman
 Charles T. Newman

LINE TABLE		
LINE	LENGTH	BEARING
L1	24.96	S 00°37'24" E
L2	132.92	N 79°34'55" E
L3	140.14	N 76°49'12" W
L4	69.20	N 83°48'55" W
L5	101.08	S 83°55'00" W
L6	216.48	S 72°34'10" W
L7	603.69	S 74°40'31" W

Member of Professional Land Surveyors of Ohio Land Surveys, Subdivisions



C. TIM NEWMAN
 Professional Surveyor

66 Elmwood Place Athens, Ohio 45701 740-594-1884 FAX 740-594-9413

"Sight" Survey 970324-Z-0324
 Monday, July 21, 2003 8:52 am.
 Pg: 1
 Registered to:
 ATHENS COUNTY ENGINEER DEPT.
 File Name:
 C:\LOTSPL~1\ALEX\S25\C69-50-6.ZAK

Point	Direction	Distance	Northing	Easting	Elevation
Database opened: Monday, July 21, 2003 8:45 am.					
Assigned point					
1			5000.00000	5000.00000	0.000
Start					
1			5000.00000	5000.00000	0.000
Raw:	n79.3455e	132.92			
TR	N 79°34'55.0" E	132.920			
2			5024.03580	5130.72875	0.000
Raw:	s89.3551e	1364.45			
TR	S 89°35'51.0" E	1364.450			
3			5014.45069	6495.14508	0.000
Raw:	s00.0839w	1558.58			
TR	S 0°08'39.0" W	1558.580			
4			3455.87562	6491.22342	0.000
Raw:	n76.4912w	140.14			
TR	N 76°49'12.0" W	140.140			
5			3487.82909	6354.77491	0.000
Raw:	n83.4855w	69.20			
TR	N 83°48'55.0" W	69.200			
6			3495.28430	6285.97767	0.000
Raw:	s83.5500w	101.08			
TR	S 83°55'00.0" W	101.080			
7			3484.57236	6185.46687	0.000
Raw:	s72.3410w	216.48			
TR	S 72°34'10.0" W	216.480			
8			3419.72585	5978.92748	0.000
Raw:	s74.4031w	603.69			
TR	S 74°40'31.0" W	603.690			
9			3260.17710	5396.70260	0.000
Raw:	n00.0353w	651.59			
TR	N 0°03'53.0" W	651.590			
10			3911.76668	5395.96655	0.000
Raw:	s89.5607w	384.12			
TR	S 89°56'07.0" W	384.120			
11			3911.33277	5011.84680	0.000
Raw:	n00.3724w	1088.72			
TR	N 0°37'24.0" W	1088.720			
12			4999.98835	5000.00261	0.000
IN	N 12°36'15.9" W	0.012			
1			5000.00000	5000.00000	0.000

Area = 2206692.069 Sq. Feet or 50.659 Acres

Database Saved: Monday, July 21, 2003 8:52 am.