

BRANNER SURVEYING

MEMBER-PROFESSIONAL LAND SURVEYORS OF OHIO

12500 N. PEACH RIDGE ROAD
ATHENS, OHIO 45701

JOHN M. BRANNER
Registered Land Surveyor

TELEPHONE
(614) 592-5778

DESCRIPTION OF A 87.33 ACRE TRACT

Situated in Section 13, T.6, R.13, Ames Township, Athens County, Ohio and being more particularly described as follows:

Commencing at a stone found that bears South 84 Degrees 18 Minutes 59 Seconds West, 758.34 feet from the North-west corner of the South-west Quarter of Section 7, thence South 37 degrees 45 minutes 00 seconds West, a distance of 1955.62 feet to A railroad spike in State Route 690, said spike being the POINT OF BEGINNING;
thence, along said road, South 31 degrees 53 minutes 08 seconds East, a distance of 57.42 feet;
thence, leaving said road, South 63 degrees 32 minutes 24 seconds West, a distance of 469.92 feet;
thence South 83 degrees 03 minutes 32 seconds West, a distance of 209.88 feet;
thence South 59 degrees 03 minutes 32 seconds West, a distance of 330.00 feet;
thence South 48 degrees 03 minutes 32 seconds West, a distance of 357.72 feet;
thence North 33 degrees 11 minutes 23 seconds East, a distance of 94.82 feet to an iron pin;
thence North 21 degrees 28 minutes 52 seconds East, a distance of 338.00 feet to an iron pin;
thence North 51 degrees 01 minute 08 seconds West, a distance of 1130.00 feet to an iron pin;
thence North 53 degrees 53 minutes 08 seconds West, a distance of 620.00 feet to an iron pin;
thence North 15 degrees 13 minutes 22 seconds West, a distance of 294.17 feet to an iron pin;
thence North 67 degrees 13 minutes 22 seconds West, a distance of 439.75 feet to an iron pin;
thence North 13 degrees 43 minutes 22 seconds West, a distance of 485.93 feet to an iron pin;
thence South 75 degrees 31 minutes 38 seconds West, a distance of 455.81 feet to an iron pin;
thence North 58 degrees 28 minutes 22 seconds West, a distance of 481.86 feet to a point;
thence South 89 degrees 48 minutes 34 seconds East, a distance of 2631.15 feet to a rail road spike in State Route 690;
thence, along State Route 690, South 31 degrees 08 minutes 54 seconds East, a distance of 151.31 feet;
thence South 41 degrees 43 minutes 54 seconds East, a distance of 306.19 feet;
thence South 45 degrees 39 minutes 44 seconds East, a distance of 424.63 feet;

Ames #13

7

BRANNER SURVEYING

MEMBER-PROFESSIONAL LAND SURVEYORS OF OHIO

12500 N. PEACH RIDGE ROAD
ATHENS, OHIO 45701

JOHN M. BRANNER
Registered Land Surveyor

TELEPHONE
(614) 592-5778

thence South 33 degrees 04 minutes 44 seconds East, a distance of
138.62
feet;
thence South 18 degrees 49 minutes 44 seconds East, a distance of
128.70 feet;
thence South 14 degrees 40 minutes 28 seconds East, a distance of
143.94 feet;
thence South 20 degrees 31 minutes 54 seconds East, a distance of
284.15 feet;
thence South 26 degrees 30 minutes 23 seconds East, a distance of
323.93 feet;
thence South 31 degrees 50 minutes 38 seconds East, a distance of
129.44 feet;
thence South 41 degrees 09 minutes 25 seconds East, a distance of
179.86 feet to the POINT OF BEGINNING; said described tract
containing 87.333 acres.

Subject to all easements and rights of way of record.

John M. Branner P.S. 6805

Description checked for
Mathematical Accuracy
ATHENS COUNTY
ENGINEER'S OFFICE
BY: S. Blum
DATE: 1-6-94

8

BRANNER SURVEYING

MEMBER-PROFESSIONAL LAND SURVEYORS OF OHIO

12500 N. PEACH RIDGE ROAD
ATHENS, OHIO 45701

JOHN M. BRANNER
Registered Land Surveyor

TELEPHONE
(614) 592-5778

DESCRIPTION OF A 65.36 ACRE TRACT

Situated in Section 13, T.6, R.13, Ames Township, Athens County, Ohio and being more particularly described as follows:

Commencing at a stone found that bears South 84 Degrees 18 Minutes 59 Seconds West, 758.34 feet from the North-west corner of the South-west Quarter of Section 7, thence North 84 degrees 18 minutes 59 seconds West, a distance of 821.53 feet to a fence corner the POINT OF BEGINNING;

thence South 64 degrees 01 minute 31 seconds West, a distance of 602.70 feet to an iron pin;

thence South 61 degrees 19 minutes 39 seconds West, a distance of 333.91 feet to an iron pin;

thence South 79 degrees 07 minutes 02 seconds West, a distance of 131.91 feet to a point in State Route 690, passing an iron pin at 95.79 feet;

thence, along said road, North 45 degrees 39 minutes 44 seconds West, a distance of 424.63 feet;

thence North 41 degrees 43 minutes 54 seconds West, a distance of 306.19 feet;

thence North 31 degrees 08 minutes 54 seconds West, a distance of 151.31 feet;

thence North 30 degrees 29 minutes 00 seconds West, a distance of 59.05 feet;

thence North 27 degrees 33 minutes 56 seconds West, a distance of 393.93 feet;

thence North 23 degrees 42 minutes 43 seconds West, a distance of 149.66 feet;

thence North 18 degrees 41 minutes 14 seconds West, a distance of 357.19 feet;

thence North 14 degrees 40 minutes 25 seconds West, a distance of 55.31 feet;

thence, North 9 degrees 52 minutes 36 seconds West, a distance of 49.62 feet;

thence, leaving State Route 690, North 61 degrees 26 minutes 19 seconds East, a distance of 1244.16 feet to an iron pin, passing an iron pin at 37.52 feet;

thence South 42 degrees 23 minutes 28 seconds East, a distance of 1420.74 feet to a stone;

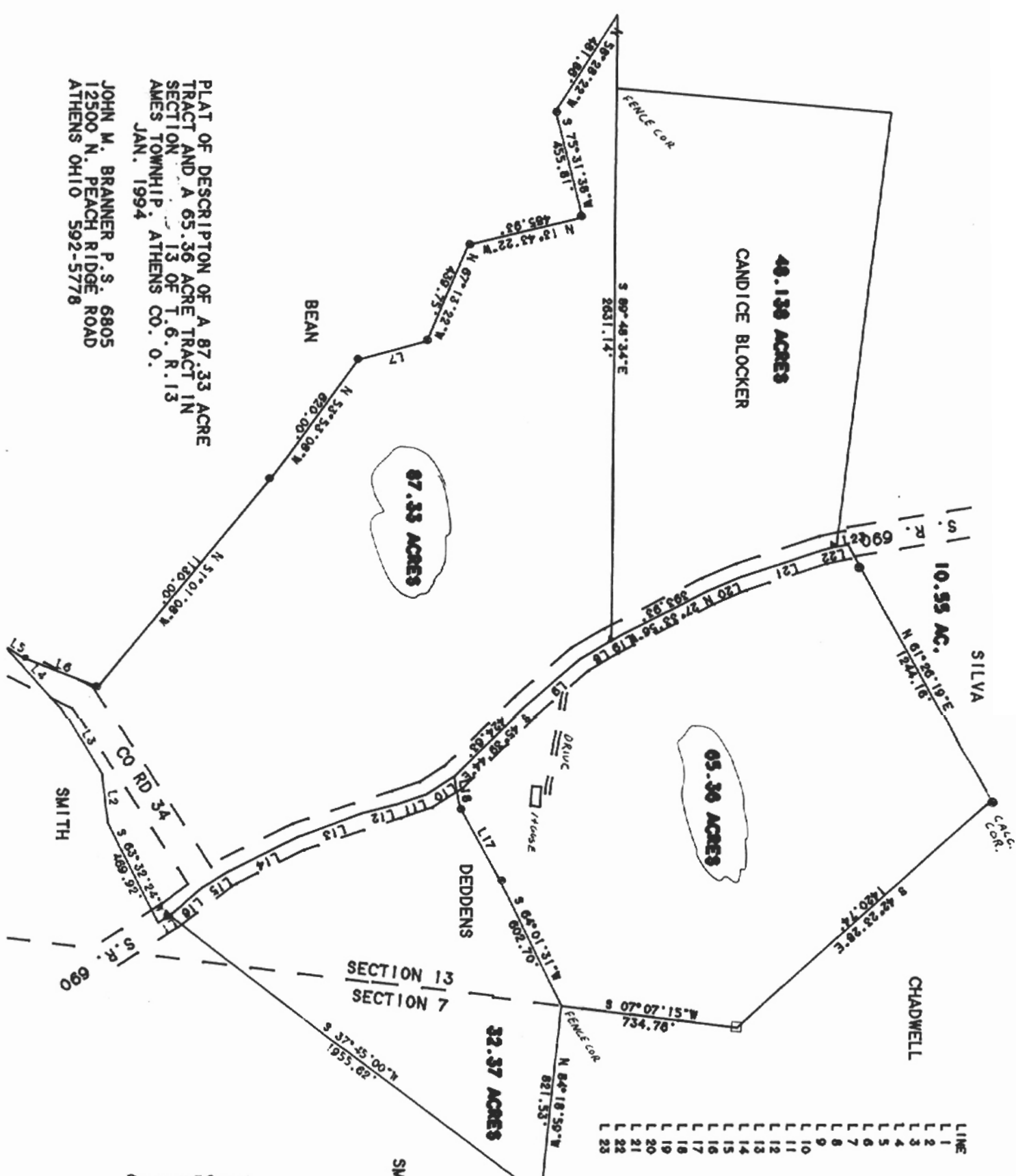
thence South 7 degrees 07 minutes 15 seconds West, a distance of 734.76 feet to the POINT OF BEGINNING; said described tract containing 65.360 acres.

Subject to all easements and rights of way of record.

Description checked for
Mathematical Accuracy
ATHENS COUNTY
ENGINEER'S OFFICE
BY: *Richard S. Clausen*
DATE: 1-6-94

JOHN M. BRANNER P.S. 6805

9



LINE	BEARING	DISTANCE
L 1	S 31° 53' 08" E	57.42'
L 2	S 83° 03' 32" W	209.08'
L 3	S 59° 03' 32" W	330.00'
L 4	S 48° 03' 32" W	357.72'
L 5	N 33° 11' 23" E	94.82'
L 6	N 21° 28' 52" E	336.00'
L 7	N 15° 13' 22" W	294.17'
L 8	S 31° 08' 54" E	151.31'
L 9	S 41° 43' 54" E	306.19'
L 10	S 33° 04' 44" E	136.62'
L 11	S 18° 40' 44" E	128.70'
L 12	S 14° 40' 28" E	143.94'
L 13	S 20° 31' 54" E	284.15'
L 14	S 28° 30' 23" E	323.93'
L 15	S 31° 50' 38" E	129.44'
L 16	S 41° 09' 25" E	179.66'
L 17	S 61° 19' 39" W	333.91'
L 18	S 79° 07' 02" W	131.91'
L 19	N 30° 29' 00" W	59.05'
L 20	N 23° 42' 43" W	149.66'
L 21	N 18° 41' 14" W	357.19'
L 22	N 14° 40' 25" W	55.31'
L 23	N 09° 52' 36" W	49.62'

PLAT OF DESCRIPTION OF A 87.33 ACRE TRACT AND A 65.36 ACRE TRACT IN SECTION 13 OF T. 6. R. 13 AMES TOWNSHIP, ATHENS CO. O. JAN. 1994

JOHN M. BRANNER P.S. 6805
12500 N. PEACH RIDGE ROAD
ATHENS OHIO 592-5778

SCALE 1 INCH = 400 FEET
● IRON PIN
□ STONE
NOTE: THIS PLAT IS BASED ON EXISTING SURVEYS AND PARTLY ON A FIELD SURVEY
BEARINGS BASED ON 32.37 AC. TRACT

STONE BEARS
S 89° 18' 33" E 65.00'
759.34 GOLF
FROM N.W. 1/4
OF S.E.C. 7