

IVAN WEAVER LANDS

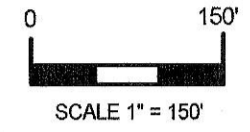
WESLEY TOWNSHIP, WASHINGTON COUNTY, OHIO
SECTION 2, RANGE 12 WEST, TOWNSHIP 7 NORTH
and
BERN TOWNSHIP, ATHENS COUNTY, OHIO
SECTION 8, RANGE 12 WEST, TOWNSHIP 7 NORTH

D. MORRIS
VOL. 261 PG. 26
VOL. 261 PG. 28

G. REYNOLDS
VOL. 526 PG. 86
82 ACRES

PRIOR REFERENCE TO IVAN WEAVER
ATHENS CO. OR VOLUME 394 PAGE 1530
WASHINGTON CO. OR VOLUME 431 PAGE 291

PRIOR REFERENCE
ATHENS CO. OR VOLUME 391 PAGE 1698
WASHINGTON CO. OR VOLUME 427 PAGE 59



BEARINGS ARE REFERENCED TO A SURVEY
BY ROGER CLAUS OF THE PARENT TRACT
DATED NOVEMBER 1, 2005

- = 5/8" STEEL ROD WITH INSCRIPTION
"NEAL G. HUGHES RLS 6714", SET
- = 5/8" STEEL ROD WITH INSCRIPTION
"SURVEY MARKER CLAUS 8458", FOUND



SURVEYED ON AUGUST 17, 2006 BY:
NEAL HUGHES, R.L.S. #6714
ELLENBORO, WV 26346

FILE NO. 06-29

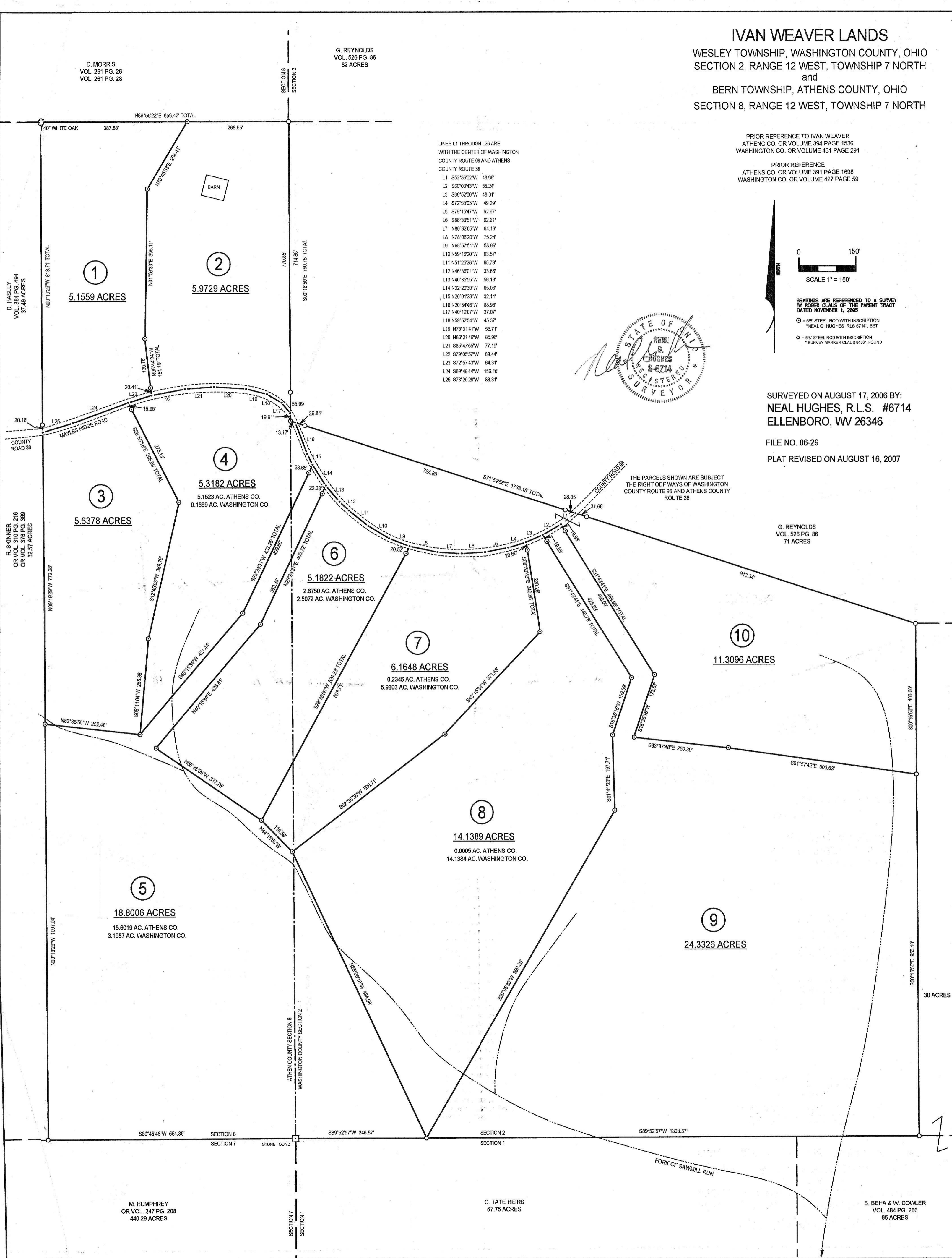
PLAT REVISED ON AUGUST 16, 2007

G. REYNOLDS
VOL. 526 PG. 86
71 ACRES

THE PARCELS SHOWN ARE SUBJECT
THE RIGHT OF WAYS OF WASHINGTON
COUNTY ROUTE 96 AND ATHENS COUNTY
ROUTE 38

LINES L1 THROUGH L26 ARE
WITH THE CENTER OF WASHINGTON
COUNTY ROUTE 96 AND ATHENS
COUNTY ROUTE 38

- L1 S52°36'02"W 48.66'
- L2 S60°03'43"W 55.24'
- L3 S66°52'00"W 48.01'
- L4 S72°55'03"W 49.29'
- L5 S79°15'47"W 62.67'
- L6 S86°33'51"W 62.61'
- L7 N86°32'05"W 64.16'
- L8 N78°06'20"W 75.24'
- L9 N88°57'51"W 58.96'
- L10 N59°16'20"W 63.57'
- L11 N51°25'28"W 65.79'
- L12 N46°38'01"W 33.66'
- L13 N40°35'55"W 56.18'
- L14 N32°20'30"W 65.03'
- L15 N26°01'23"W 32.11'
- L16 N20°34'46"W 88.96'
- L17 N40°12'07"W 37.07'
- L18 N59°52'54"W 45.37'
- L19 N75°31'41"W 55.71'
- L20 N86°21'46"W 85.99'
- L21 S85°47'55"W 77.19'
- L22 S79°05'57"W 89.44'
- L23 S72°57'43"W 64.31'
- L24 S69°48'44"W 156.16'
- L25 S73°20'29"W 83.31'



①
5.1559 ACRES

②
5.9729 ACRES

③
5.6378 ACRES

④
5.3182 ACRES
5.1523 AC. ATHENS CO.
0.1659 AC. WASHINGTON CO.

⑥
5.1822 ACRES
2.6750 AC. ATHENS CO.
2.5072 AC. WASHINGTON CO.

⑦
6.1648 ACRES
0.2345 AC. ATHENS CO.
5.9303 AC. WASHINGTON CO.

⑧
14.1389 ACRES
0.0005 AC. ATHENS CO.
14.1384 AC. WASHINGTON CO.

⑤
18.8006 ACRES
15.8019 AC. ATHENS CO.
3.1987 AC. WASHINGTON CO.

⑨
24.3326 ACRES

⑩
11.3096 ACRES

M. HUMPHREY
OR VOL. 247 PG. 208
440.29 ACRES

C. TATE HEIRS
57.75 ACRES

B. BEHA & W. DOWLER
VOL. 484 PG. 266
65 ACRES

D. HASLEY
VOL. 384 PG. 464
37.49 ACRES

R. SKINNER
OR VOL. 310 PG. 216
OR VOL. 376 PG. 389
32.57 ACRES

30 ACRES