

## SURVEY DESCRIPTION OF A 341.034 ACRE TRACT FOR C. AND H. DEVELOPMENT

Situated in Rome Township, Athens County, Ohio; being part of Section 18, Township 6, Range 12; and being more particularly described as follows:

**Beginning** at a 5/8" iron pin found at the Northwest corner of said Section 18; thence with the North line of said Section 18 North 89 degrees 22 minutes 39 seconds East a distance of 1905.49 feet to a PK nail set in the center of State Route 329, passing 5/8" iron pins found at distances of 54.74 feet and 1880.49 feet;

thence continuing with the North line of Section 18 North 89 degrees 25 minutes 53 seconds East a distance of 246.22 feet to a point in the center of Federal Creek, passing 5/8" iron pins set at distances of 30.00 feet and 155.00 feet, and from which a 5/8" iron pin with 1-1/4" plastic ID cap stamped CLS 7224 found at the Northeast corner of Section 18 bears North 89 degrees 25 minutes 53 seconds East at a distance of 3321.90 feet;

thence leaving the North line of Section 18 and with the center of Federal Creek the following eight bearings and distances:

- 1) South 52 degrees 04 minutes 07 seconds West a distance of 307.08 feet to a point;
- 2) South 42 degrees 54 minutes 07 seconds West a distance of 258.06 feet to a point;
- 3) South 26 degrees 31 minutes 15 seconds West a distance of 165.56 feet to a point;
- 4) South 14 degrees 19 minutes 26 seconds East a distance of 174.16 feet to a point;
- 5) South 78 degrees 56 minutes 25 seconds East a distance of 238.65 feet to a point;
- 6) South 74 degrees 51 minutes 40 seconds East a distance of 404.09 feet to a point;
- 7) South 51 degrees 21 minutes 21 seconds East a distance of 219.54 feet to a point;
- 8) South 50 degrees 39 minutes 34 seconds East a distance of 317.24 feet to a point in the North-South half section line;

South half section line;

thence leaving the center of Federal Creek and with the North-South half section line South 0 degrees 21 minutes 08 seconds East a distance of 408.34 feet to a 5/8" iron pin set, passing a 5/8" iron pin set at a distance of 68.86 feet and a PK nail set in the center of State Route 329 at a distance of 129.27 feet;

thence leaving the North-South half section line North 84 degrees 23 minutes 52 seconds East a distance of 934.14 feet to a point in the center of Federal Creek, and passing a 5/8" iron pin set at a distance of 858.00 feet;

thence with the center of Federal Creek the following eleven bearings and distances:

- 1) South 58 degrees 38 minutes 57 seconds East a distance of 57.17 feet to a point;
- 2) South 12 degrees 34 minutes 07 seconds East a distance of 197.61 feet to a point;
- 3) South 20 degrees 03 minutes 51 seconds West a distance of 305.50 feet to a point;
- 4) South 22 degrees 48 minutes 38 seconds West a distance of 306.66 feet to a point;
- 5) South 18 degrees 07 minutes 52 seconds West a distance of 640.35 feet to a point;
- 6) South 10 degrees 31 minutes 40 seconds West a distance of 620.66 feet to a point;
- 7) South 1 degree 55 minutes 55 seconds West a distance of 301.05 feet to a point;
- 8) South 7 degrees 03 minutes 04 seconds West a distance of 403.35 feet to a point;
- 9) South 14 degrees 40 minutes 59 seconds West a distance of 273.41 feet to a point;
- 10) South 18 degrees 43 minutes 45 seconds West a distance of 808.64 feet to a point;
- 11) South 24 degrees 10 minutes 35 seconds West a distance of 208.51 feet to a point on the South

line of Section 18;

thence leaving the center of Federal Creek and with the South line of Section 18 South 89 degrees 26 minutes 29 seconds West a distance of 1767.74 feet to a 5/8" iron pin set and passing 5/8" iron pins set at distances of 70.29 feet, 157.28 feet, and 217.28 feet, a PK nail set in the center of State Route 329 at a distance of 187.28 feet, and from which a stone found at the Southwest corner of Section 18 bears South

26  
Rome #18

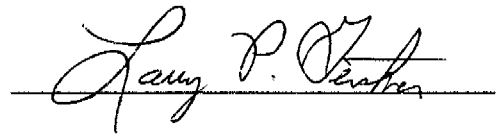
89 degrees 26 minutes 29 seconds West at a distance of 990.00 feet;

thence leaving the South line of Section 18 North 0 degrees 00 minutes 00 seconds East a distance of 1128.60 feet to a 5/8" iron pin set;

thence North 67 degrees 35 minutes 42 seconds West a distance of 1070.78 feet to a 5/8" iron pin set on the West line of Section 18;

thence with the West line of Section 18 North 0 degrees 00 minutes 00 seconds East a distance of 3891.42 feet to the point of beginning, passing 5/8" iron pins set at distances of 2216.75 feet and 2893.11 feet, containing 341.034 acres more or less, and subject to the public easement of State Route 329 and County Roads 38 and 85 and any other public or private easements of record.

The above 341.034 acre survey is intended to describe all of the 324 acre tract as deeded to C & H Development, deed reference Volume 240, Page 234, Athens County Recorder's Office. This survey was based upon information obtained from tax maps, deed descriptions, previous surveys, existing monumentation, and existing public roads. The reference bearing for this survey is the West line of Section 18 as North 0 degrees 00 minutes 00 seconds East. Bearings are based upon an assumed meridian and are to denote angles only. All iron pins set by this survey are 5/8" by 30" and are capped by a 1-1/4" plastic identification cap stamped LPG-6344. The above described property was surveyed by Larry P. Gerstner, Ohio Registered Surveyor No. 6344, on February 22, 1998.



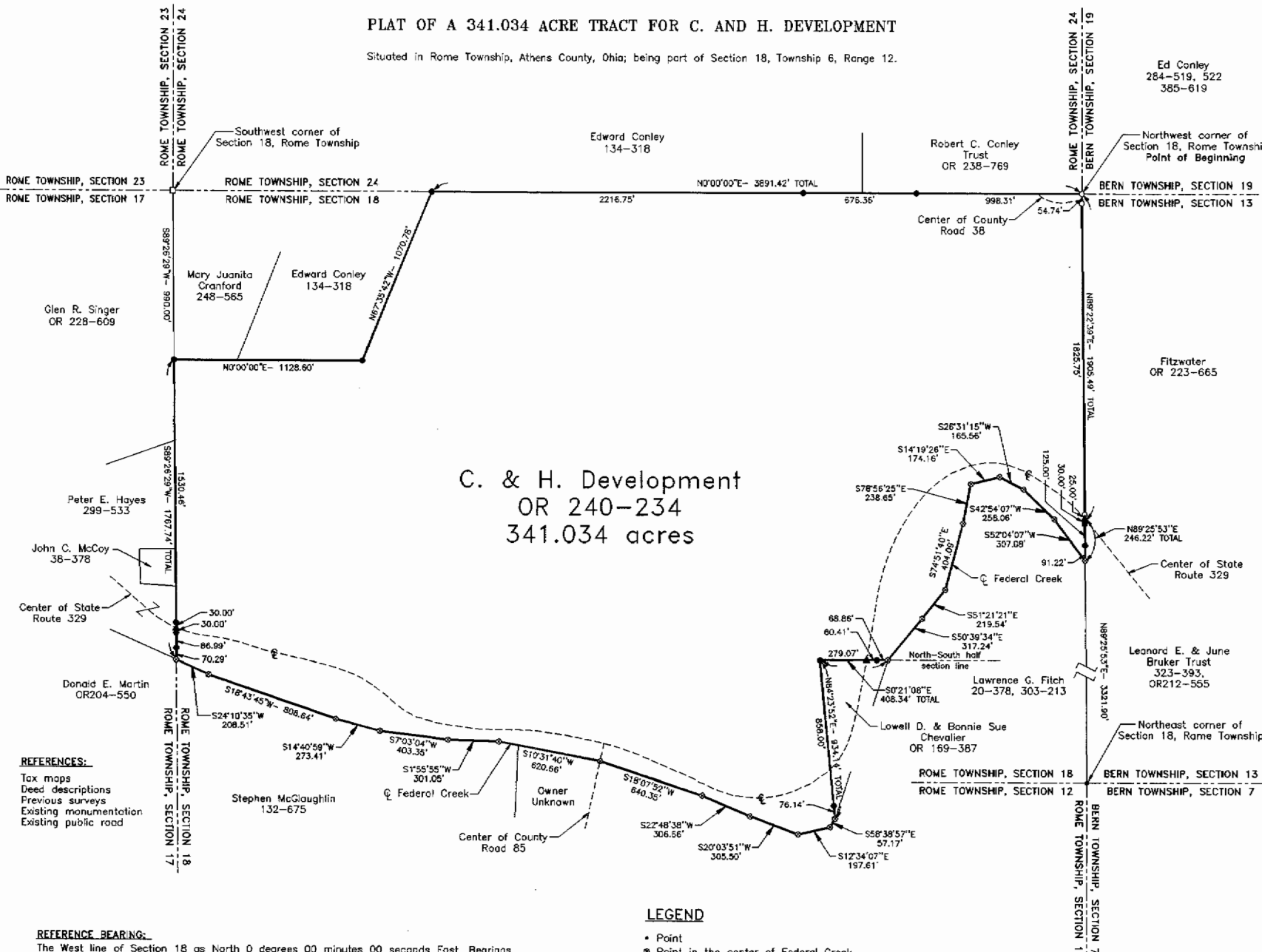


Description checked for  
Mathematical Accuracy  
ATHENS COUNTY  
ENGINEER'S OFFICE  
BY: S. Blau  
DATE: 7-25-98

Survey by:  
Larry P. Gerstner - Engineering and Surveying  
9 East Second Street, Suite A, Logan, Ohio 43138 385-4260

**PLAT OF A 341.034 ACRE TRACT FOR C. AND H. DEVELOPMENT**

Situated in Rome Township, Athens County, Ohio; being part of Section 18, Township 6, Range 12.



**C. & H. Development  
OR 240-234  
341.034 acres**

**REFERENCES:**  
Tax maps  
Deed descriptions  
Previous surveys  
Existing monumentation  
Existing public road

**REFERENCE BEARING:**  
The West line of Section 18 as North 0 degrees 00 minutes 00 seconds East. Bearings are based upon an assumed meridian and are to denote angles only.

**CERTIFICATION:**  
I hereby certify that an actual survey was made under my supervision of the premises shown hereon on the 22nd day of February, 1998 and that the plat is a correct representation of the premises as described by said survey.

Registered Surveyor No. 6344

**LEGEND**

- Point
- Point in the center of Federal Creek
- 5/8" iron pin found
- 5/8"x 30" iron pin with 1-1/4" plastic ID cap stamped LPG-6344 set
- 5/8" iron pin with 1-1/4" plastic ID cap stamped CLS 7224 found
- ▲ PK nail set
- Stone found

Ed Conley  
284-519, 522  
385-619

Robert C. Conley  
Trust  
OR 238-769

Mary Juanita  
Cranford  
248-565

Edward Conley  
134-318

Glen R. Singer  
OR 228-609

Peter E. Hayes  
299-533

John C. McCoy  
38-378

Center of State  
Route 329

Donald E. Martin  
OR204-550

Stephen McGlaughlin  
132-675

Owner  
Unknown

Center of County  
Road 85

Lowell D. & Bonnie Sue  
Chevalier  
OR 169-387

Lawrence G. Fitch  
20-378, 303-213

Leonard E. & June  
Bruker Trust  
323-393,  
OR212-565

Fitzwater  
OR 223-665

**LARRY P. GERSTNER  
ENGINEERING & SURVEYING**

9 East Second Street, Suite A, Logan, Ohio 43138  
(614) 365-4260



**PLAT OF A 341.034 ACRE TRACT  
FOR C. AND H. DEVELOPMENT**

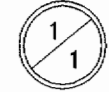
ROME TOWNSHIP, ATHENS COUNTY, OHIO

REVISIONS

NOT TO SCALE

JOB No. 8002 DRAWN BY: BAC DATED: 2/23/98

SHEET



32